

Our Coastal Community: How vulnerable are we?

Jeff Taebel, FAICP

Coastal Resiliency
Symposium

5.26.10



Storm History: H-GAC Region

1961 - Carla



1979 - Claudette



1983 - Alicia



2001 - Allison



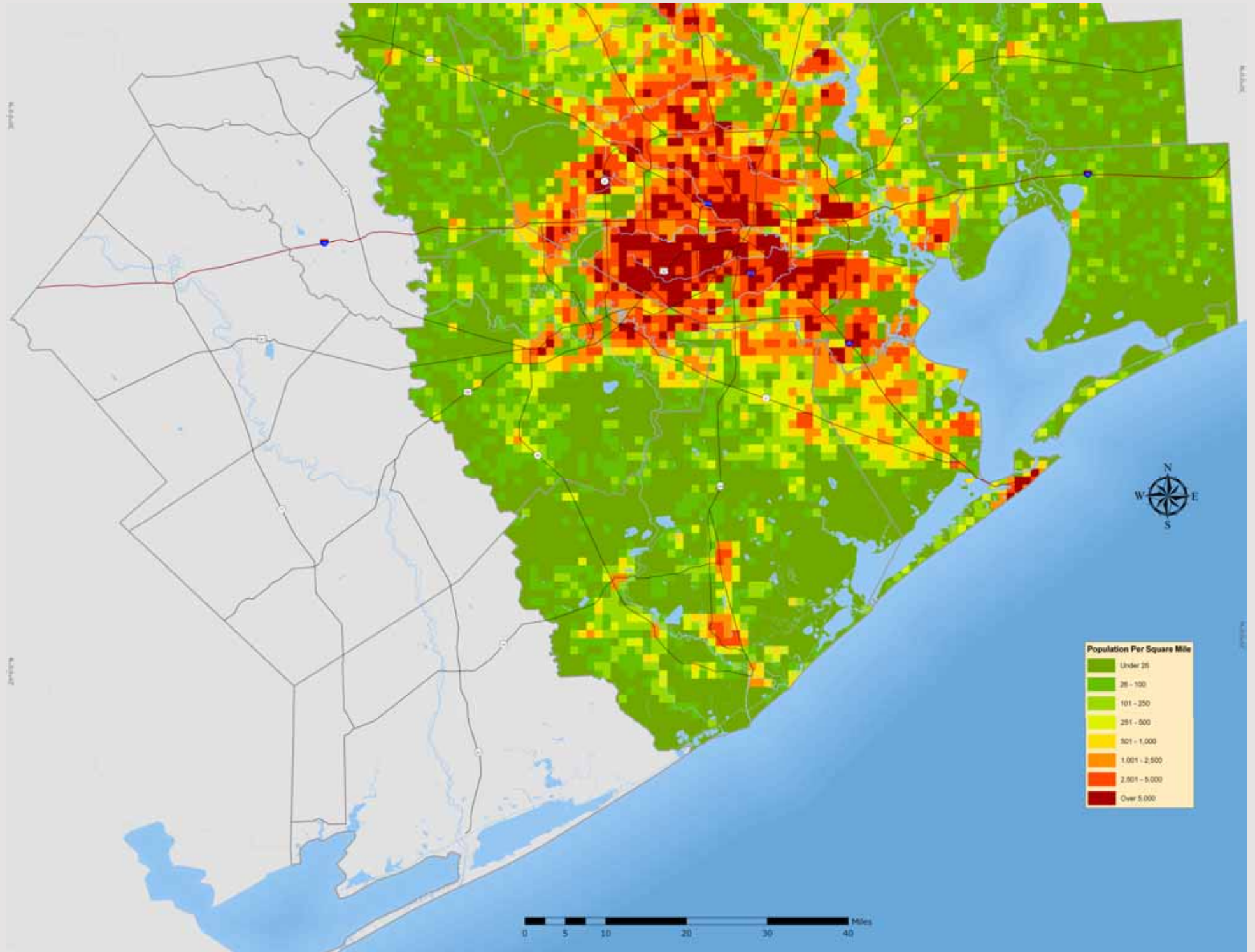
2005 - Rita



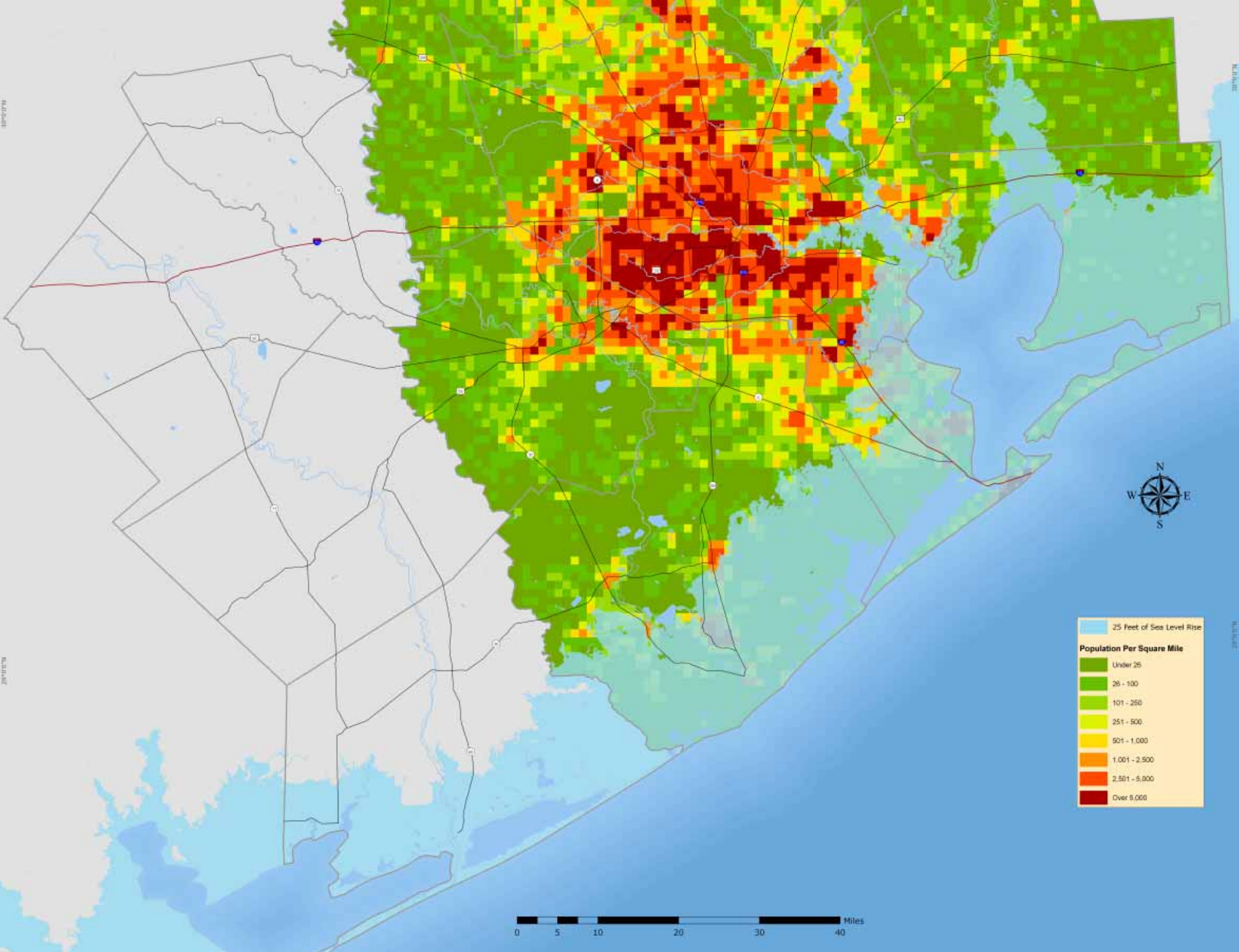
2008 - Ike



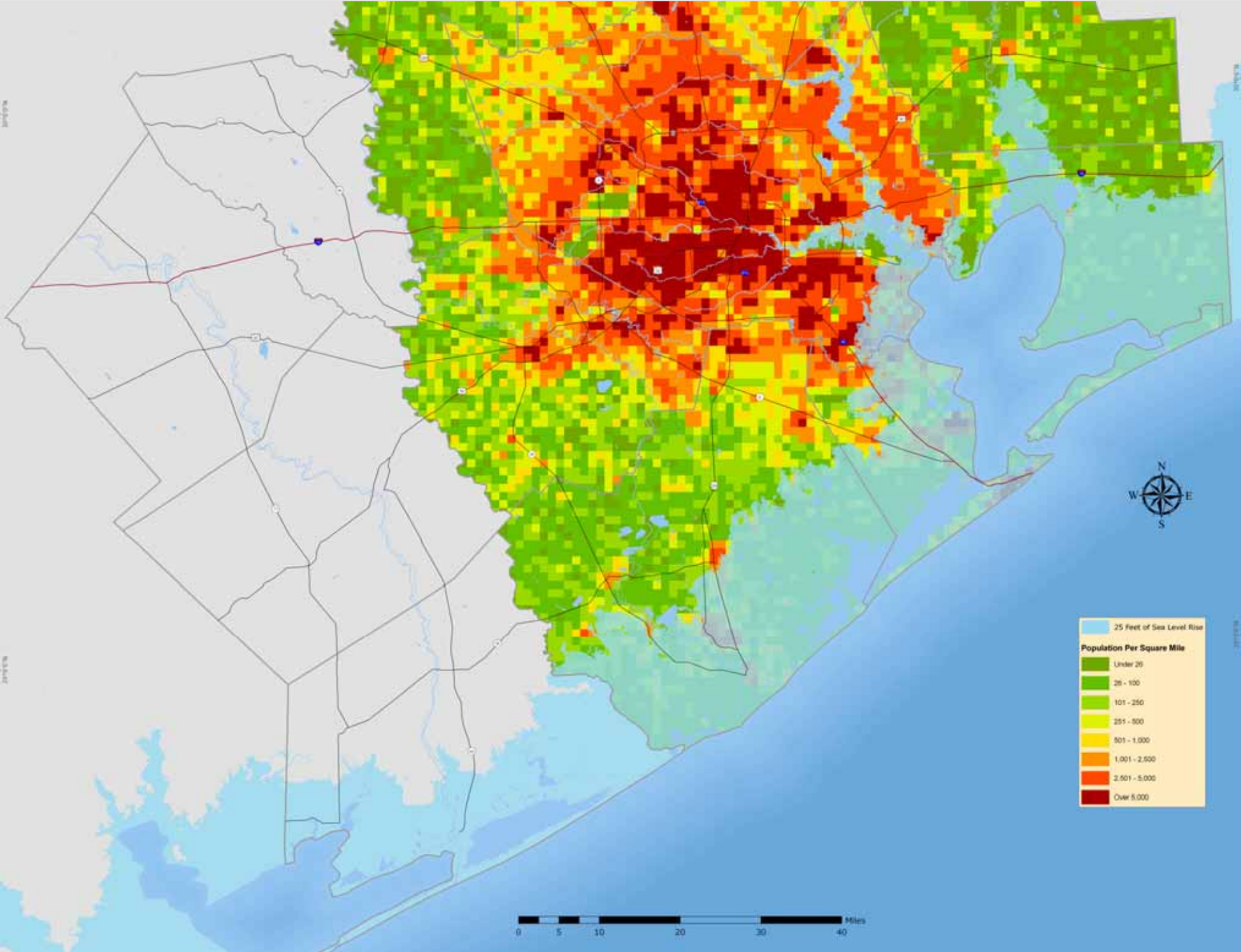
Population (2005)



Population Impacted by 25 Foot Storm Surge (2005)



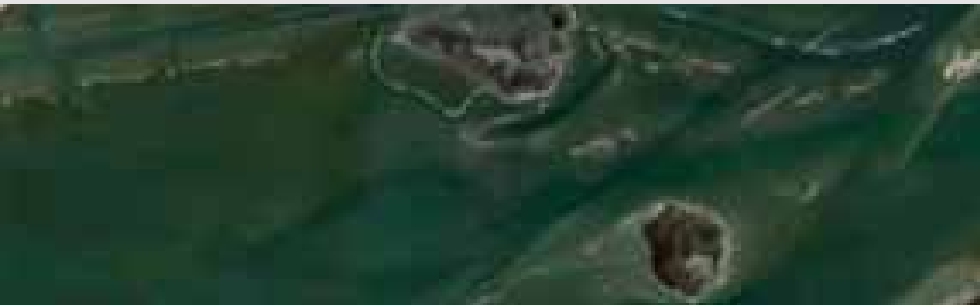
Population Impacted by 25 Foot Storm Surge (2035)



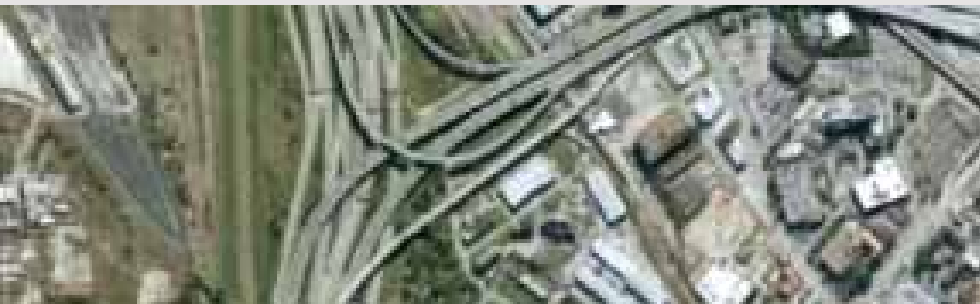
Total Improvement Value in Surge Zone by County



Brazoria
\$1,717,496,588



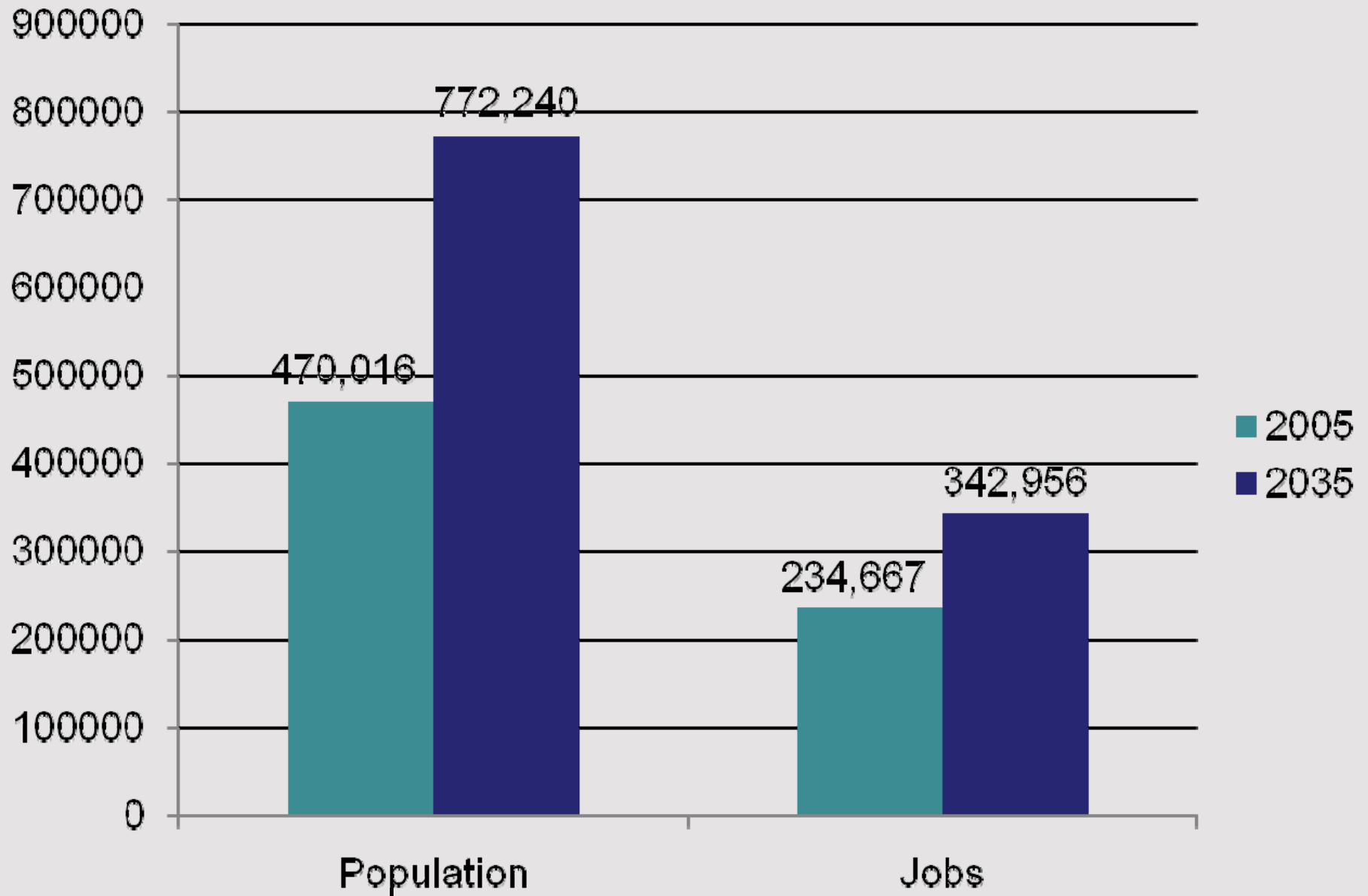
Galveston
\$9,791,439,883



Harris
\$4,862,095,613

Total **\$16,371,032,084**

Population and Jobs in Surge Areas (9% of region)



Top 10 Employers (37,000 jobs)

- UTMB
- Dow Chemical
- NASA
- United Space Alliance
- Exxon-Mobil
- Wal-Mart
- JVP Management
- Gulf Stream Marine
- American National Insurance
- BP Products NA



Total of 35 employers with over 500 jobs

Regional Assets Impacted by 25' Storm Surge





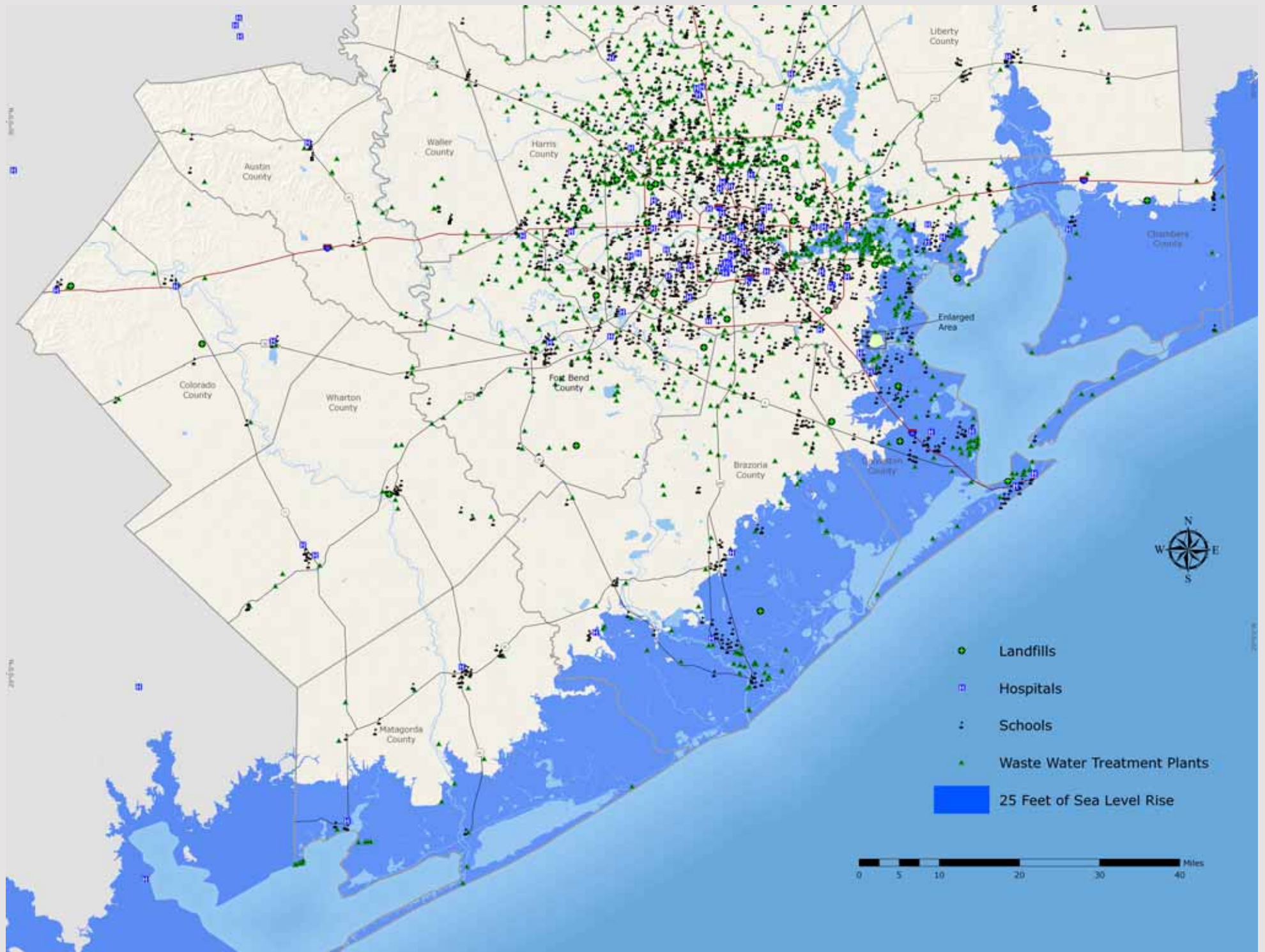








Infrastructure Impacted by 25 Foot Storm Surge



Affected Facilities in 25' Surge Zone



15 Hospitals



**278 Waste Water
Treatment Plants**



9 Landfills



124 Schools



5,470 Miles of Road

Inland Vulnerabilities



Housing



Power







Mobility

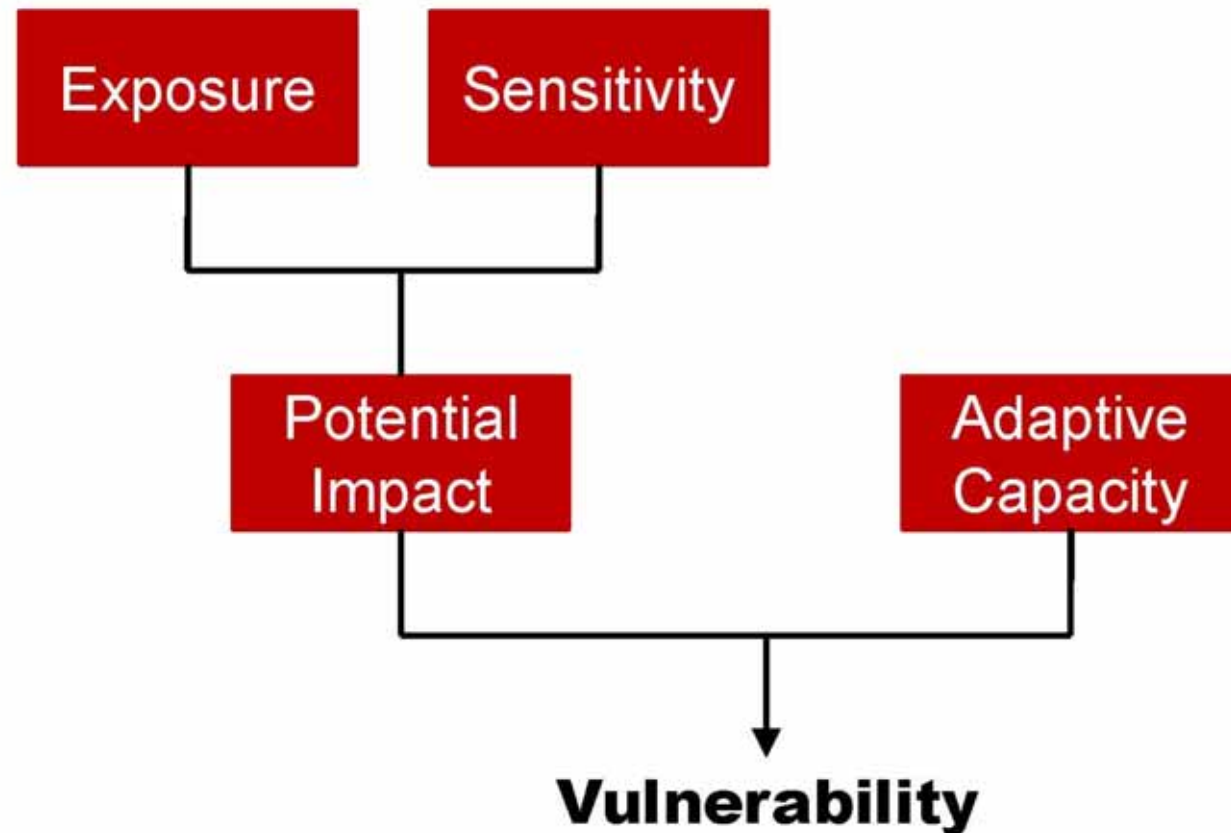


Business Continuity



Vulnerability Assessment

Vulnerability and Its Components





Jeff Taebel, FAICP

jeff.taebel@h-gac.com | 713-993-4560 | www.h-gac.com

