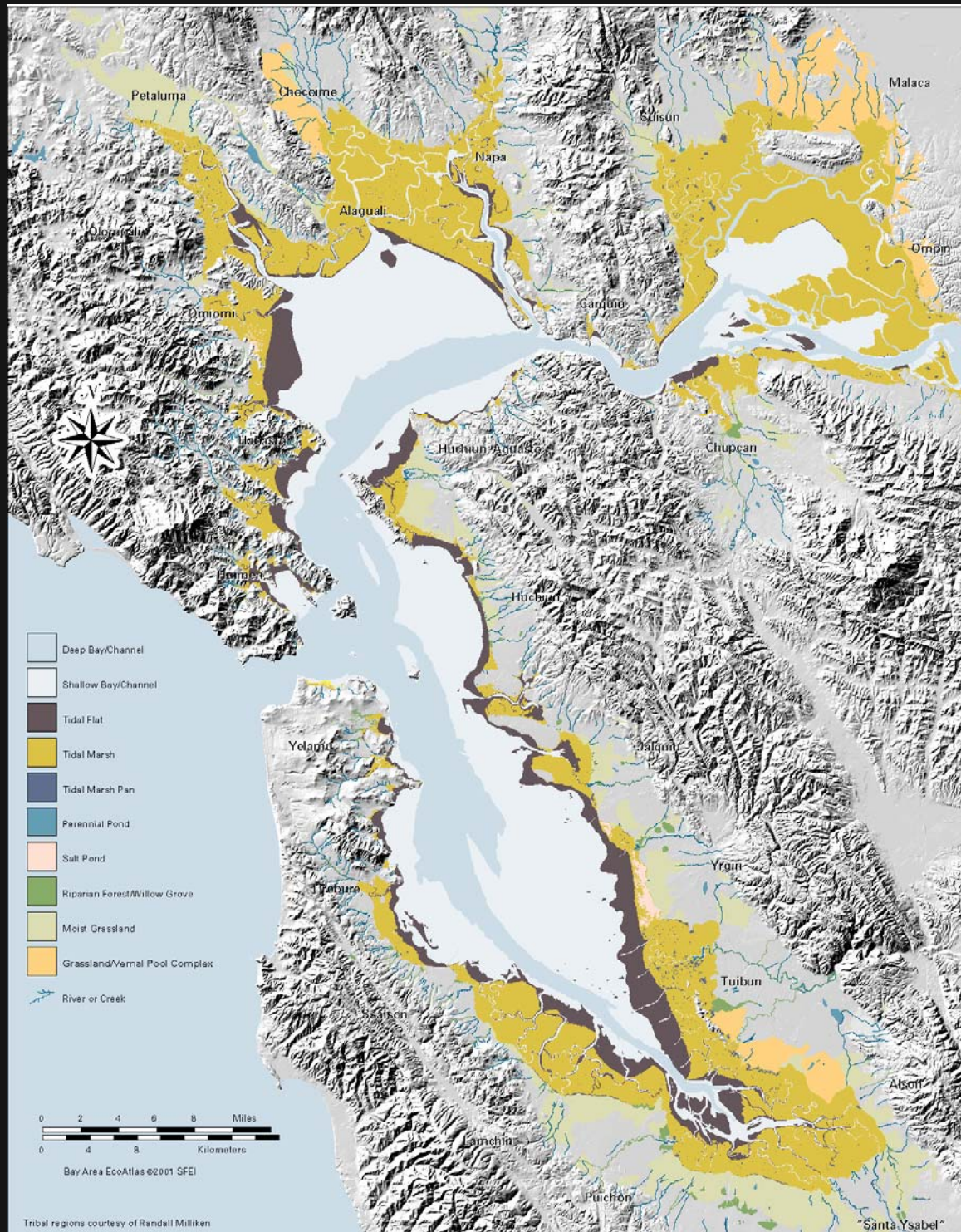


# San Francisco Bay Area Regional Climate Strategy

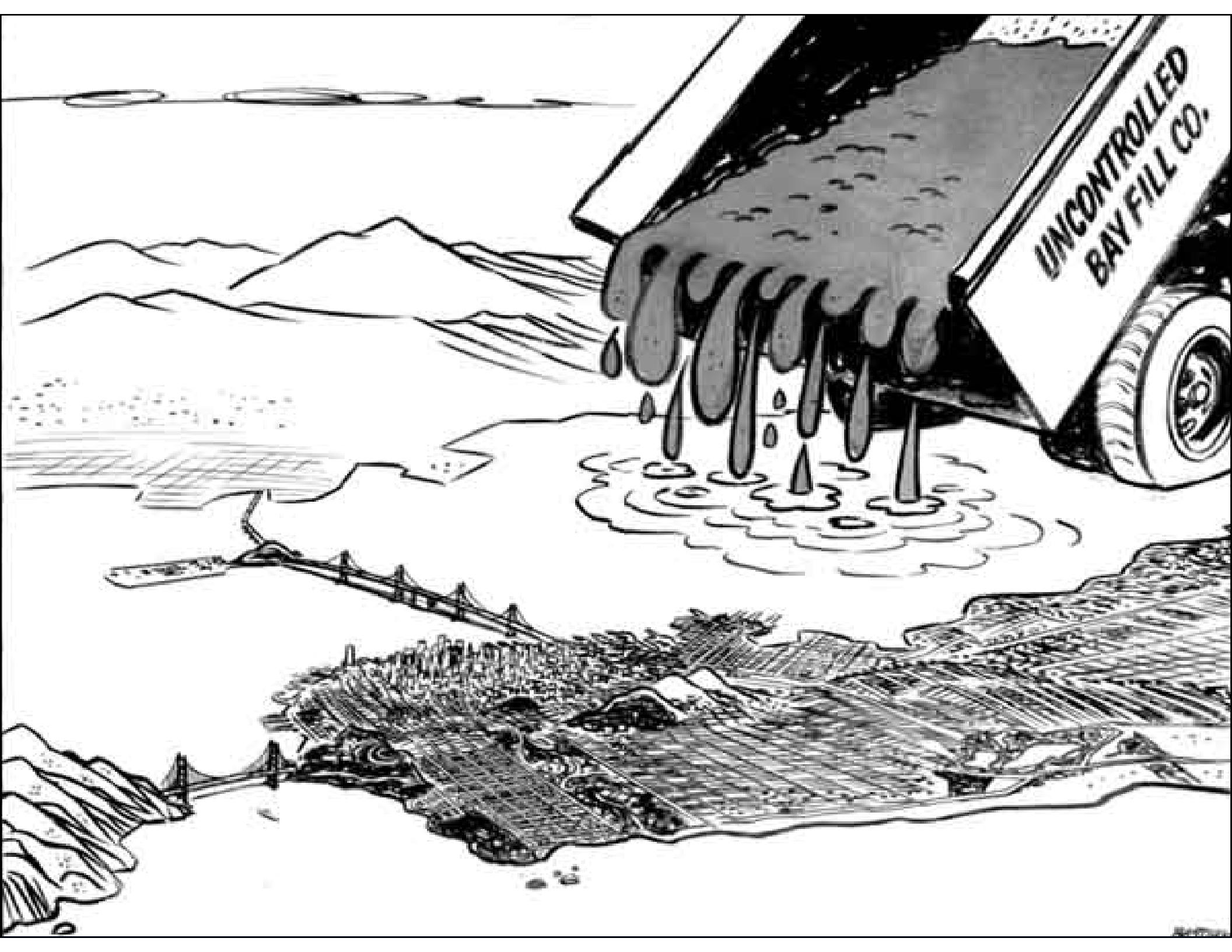


*Will Travis, Executive Director*  
San Francisco Bay Conservation and Development Commission





Tribal regions courtesy of Randall Milliken





LOOK AT THESE SCANDALOUS EMAILS!



NICH ANTONIOLO  
12/8/07  
FOOTY CHRONICLE

***Positive proof of global warming.***



**18th  
Century**

**1900**

**1950**

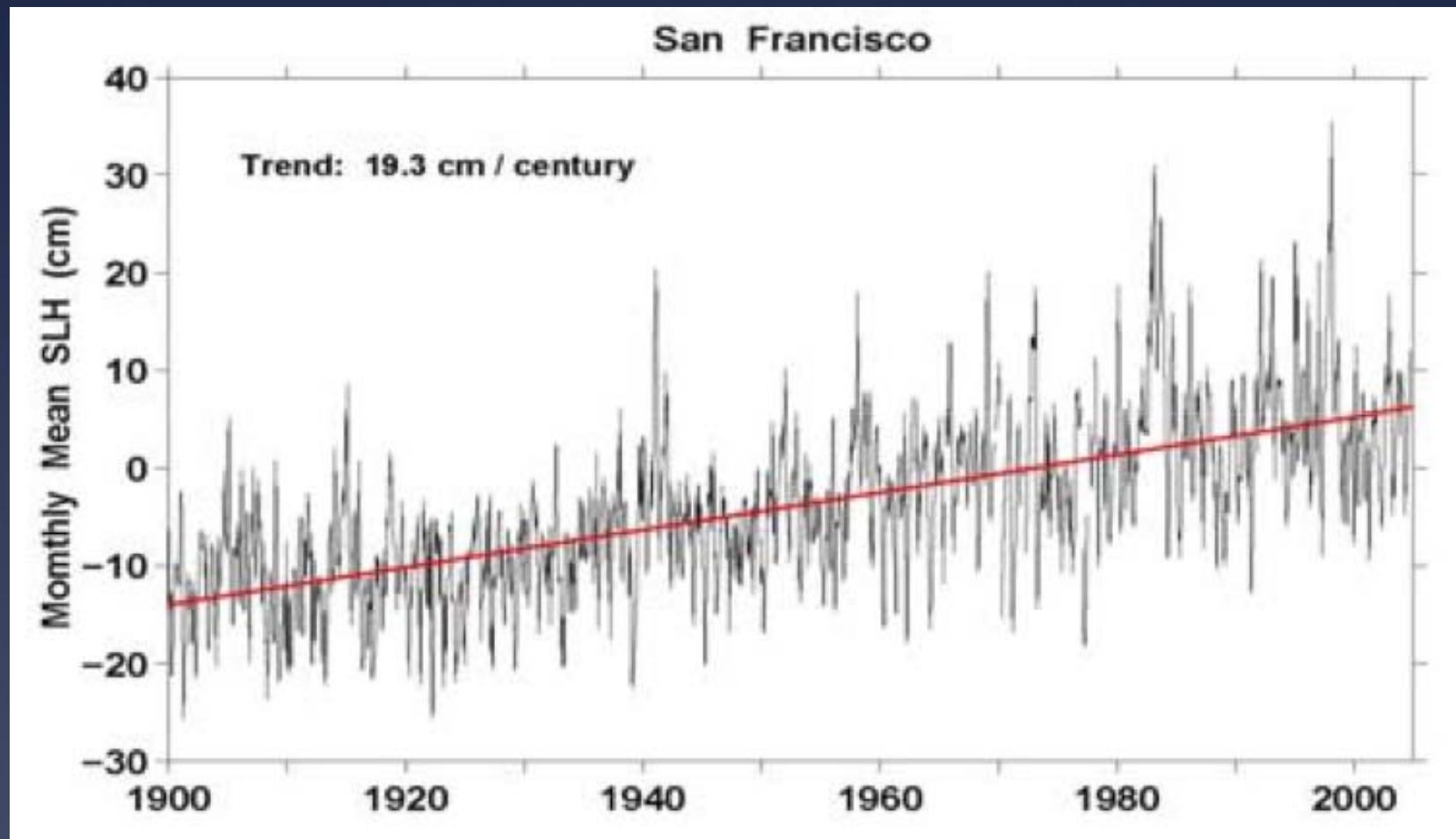
**1970**

**1980**

**1990**

**2006**

# San Francisco Observed Sea Level with trend of 19.3 cm (0.63 feet) per century

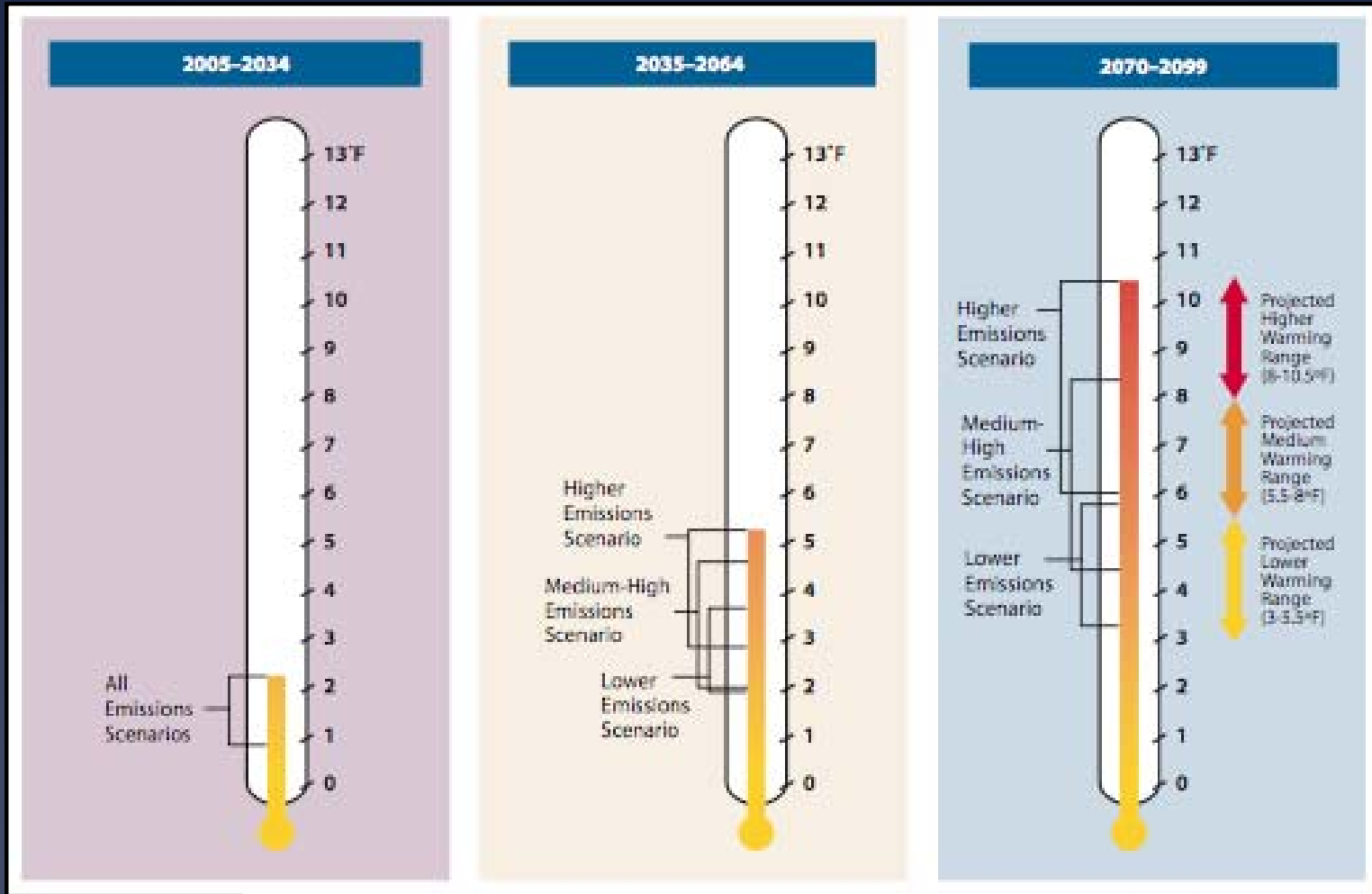


Source: California Climate Action Team Report 2006



# Climate Change Scenarios for California

Three Emissions Scenarios: Lower, Medium-High, Higher

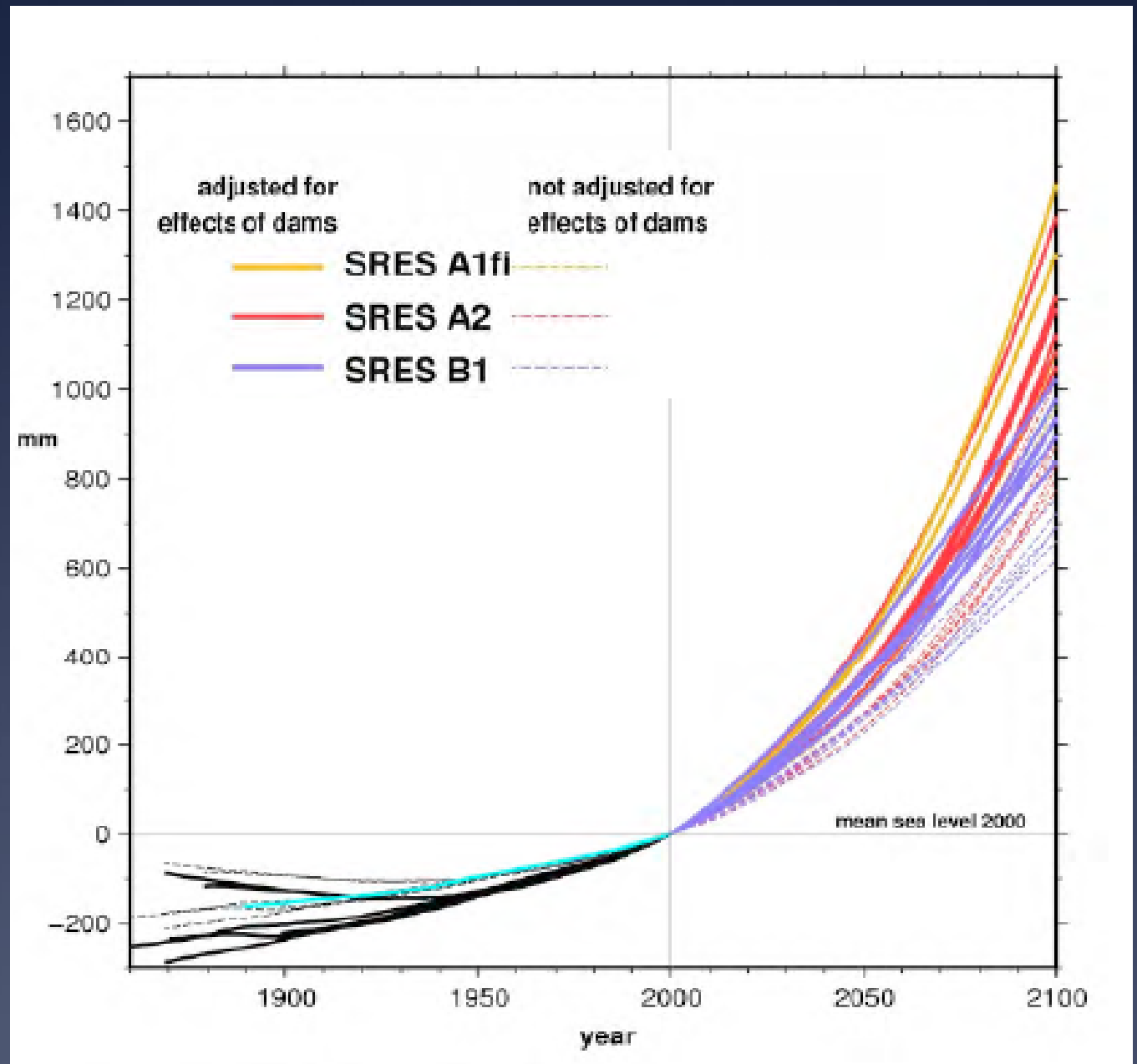


Source: California Climate Action Team Report 2006

# Projected Sea Level Rise

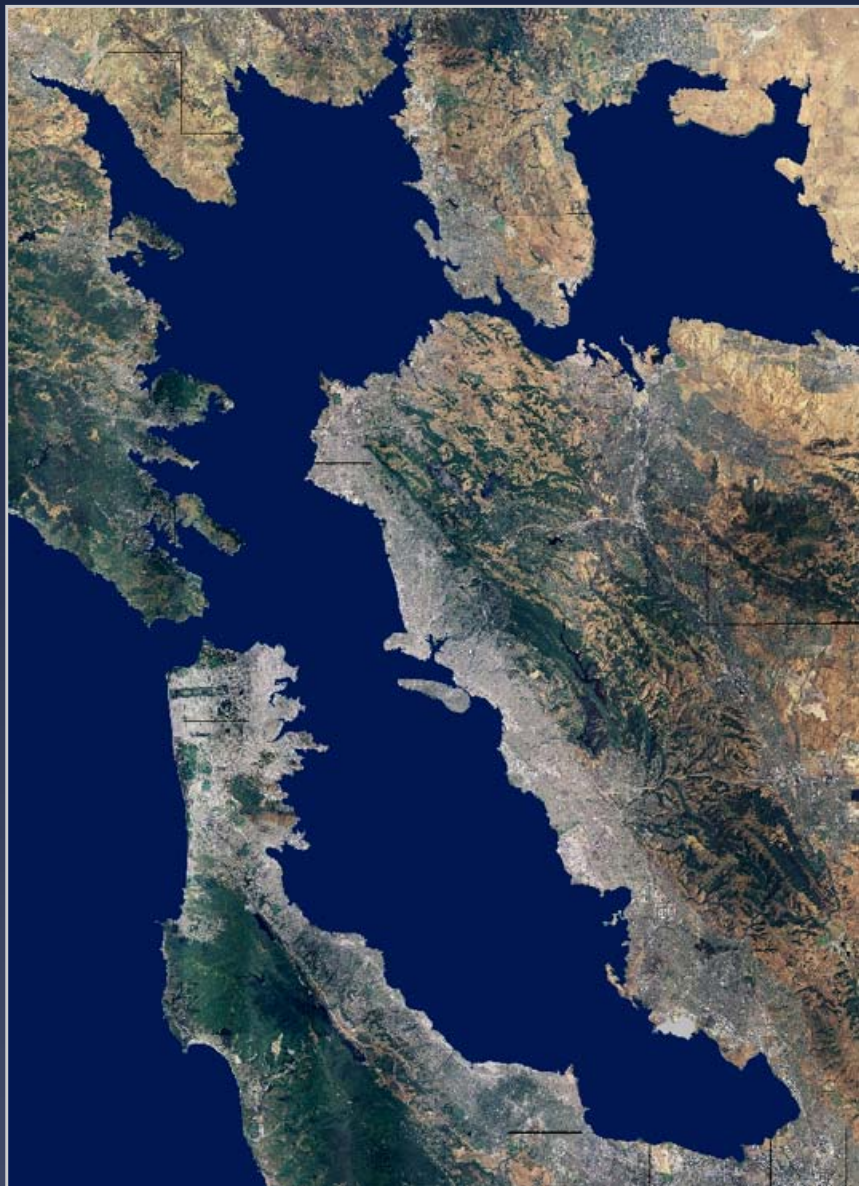
## Three Emissions Scenarios:

- A1fi – High
- A2 – Medium High
- B1 - Low

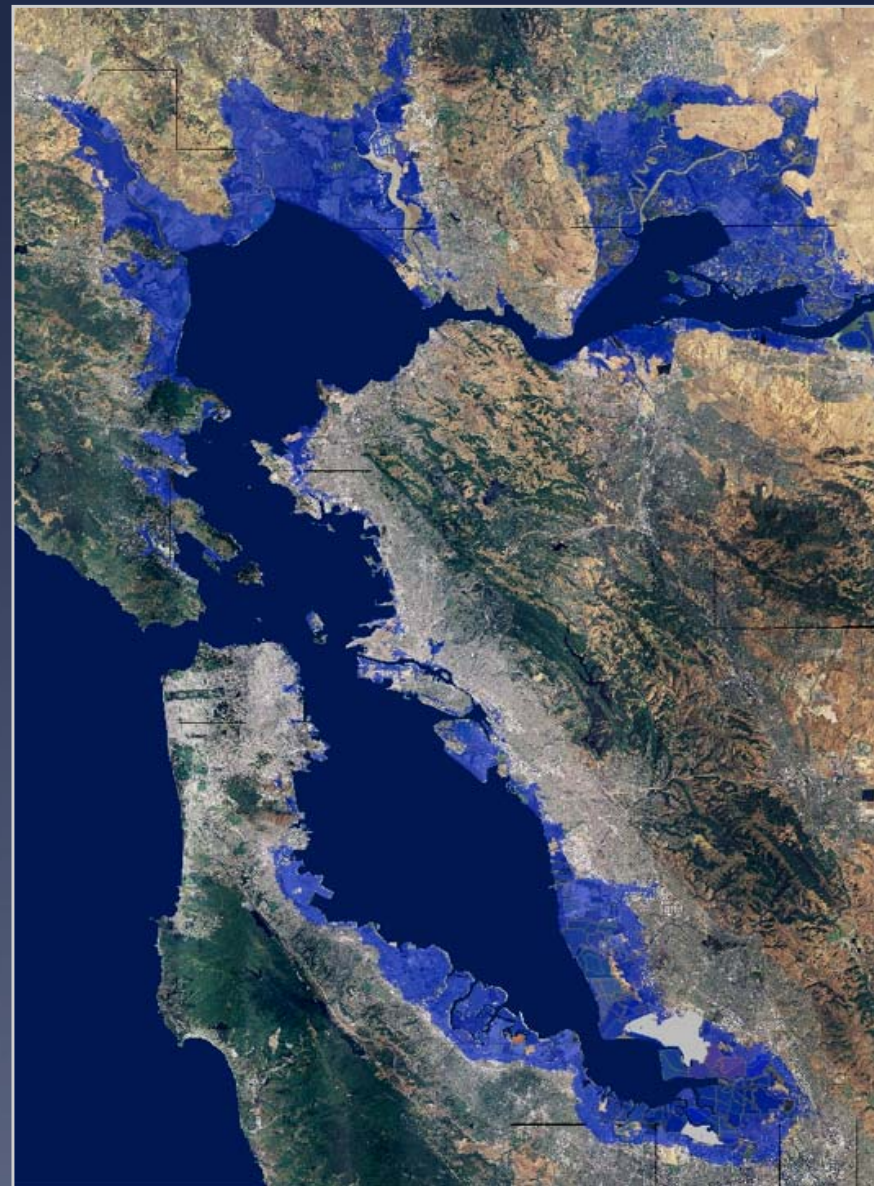


Source: California Climate Action Team Report 2009

1849


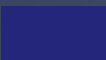


2100







# San Francisco International Airport

-  Sixteen Inch Sea Level Rise and
-  Fifty-five Inch Sea Level Rise


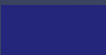


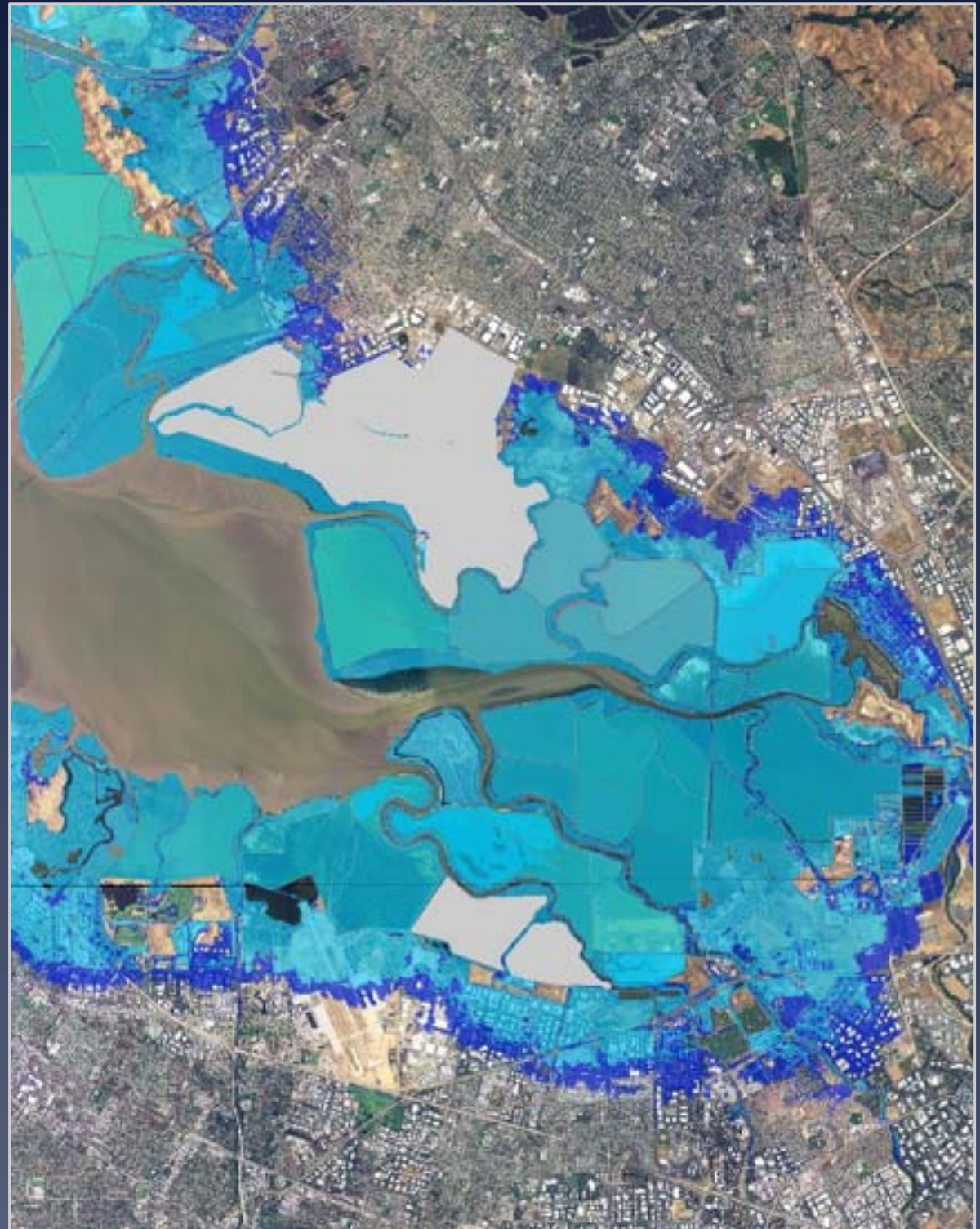
# Oakland International Airport

-  Sixteen Inch Sea Level Rise and
-  Fifty-five Inch Sea Level Rise



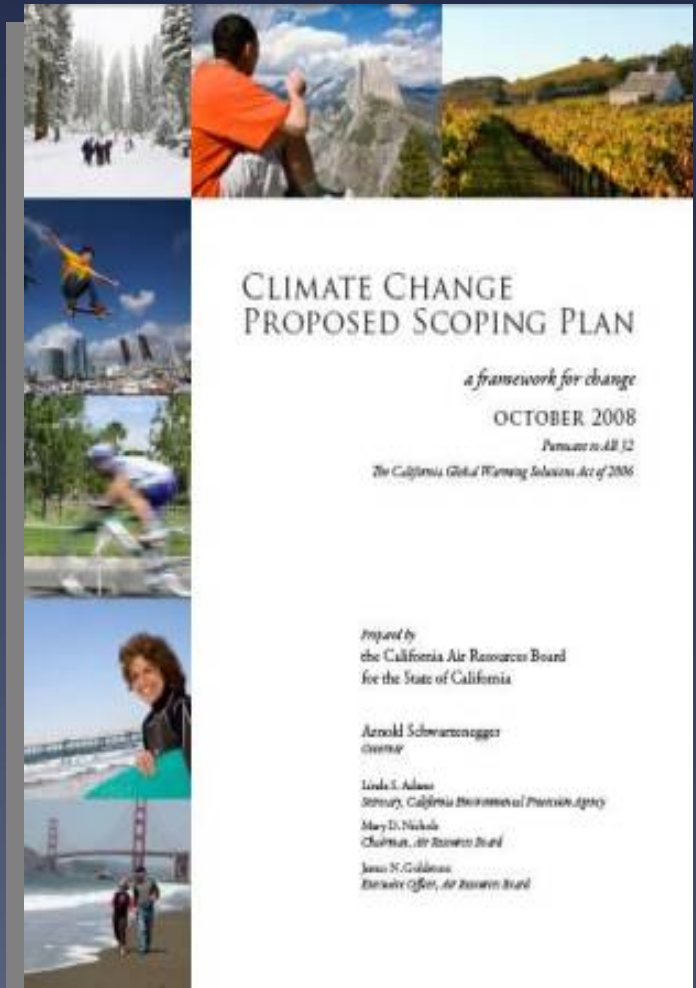
# Silicon Valley

 Sixteen Inch Sea Level Rise  
and  
 Fifty-five Inch Sea Level Rise



# California Statewide Climate Change Emissions Reduction Programs

- \* **AB 1493 (2002) Pavley Bill**
  - \* Vehicles sold in California must emit 20% fewer GHGs by 2012 and 30% fewer by 2016
- \* **AB 32 (2006) Global Warming Solutions Act**
  - \* Reduce GHG emissions at least 20% by 2020
- \* **SB 375 (2008)**
  - \* Requires regional plans to address GHG emissions from land use and transportation





Development Commission



# SHORELINE AREAS VULNERABLE TO SEA LEVEL RISE SAN FRANCISCO BAY AREA

to an approximate 10 inch sea level rise

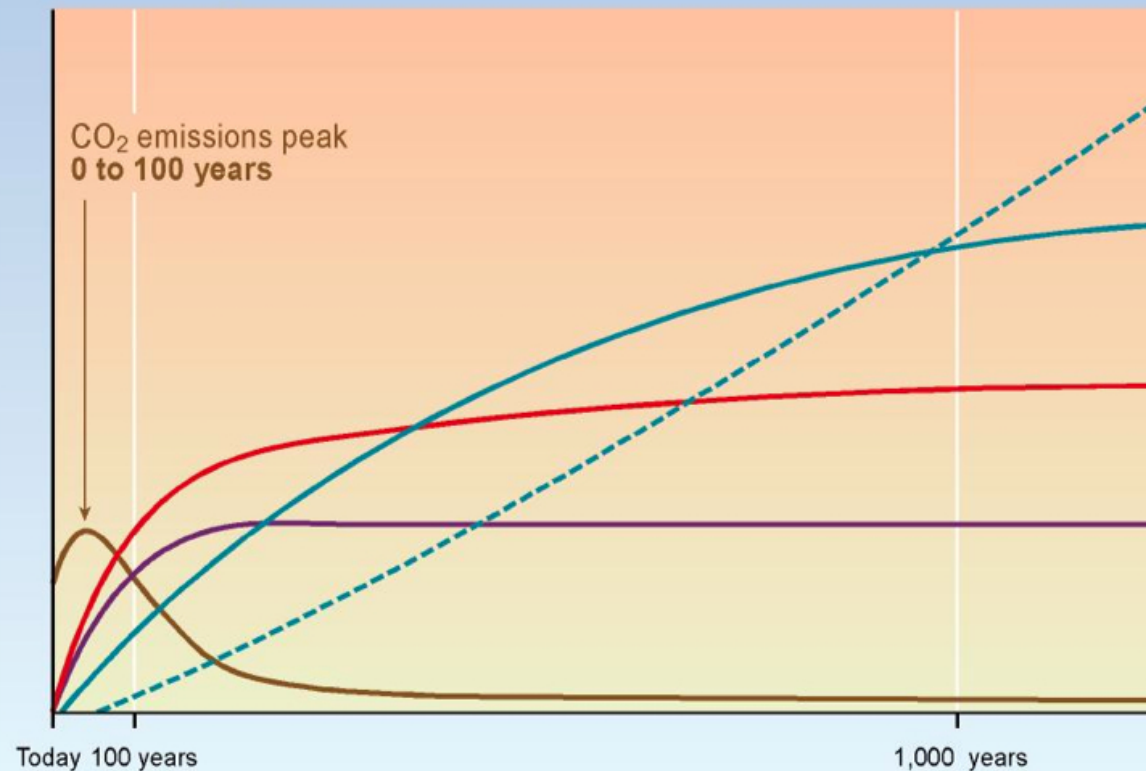
to an approximate 55 inch sea level rise



# Adaptation is a Necessity

CO<sub>2</sub> concentration, temperature, and sea level continue to rise long after emissions are reduced

Magnitude of response



Time taken to reach equilibrium

Sea-level rise due to ice melting: **several millennia**

Sea-level rise due to thermal expansion: **centuries to millennia**

Temperature stabilization: **a few centuries**

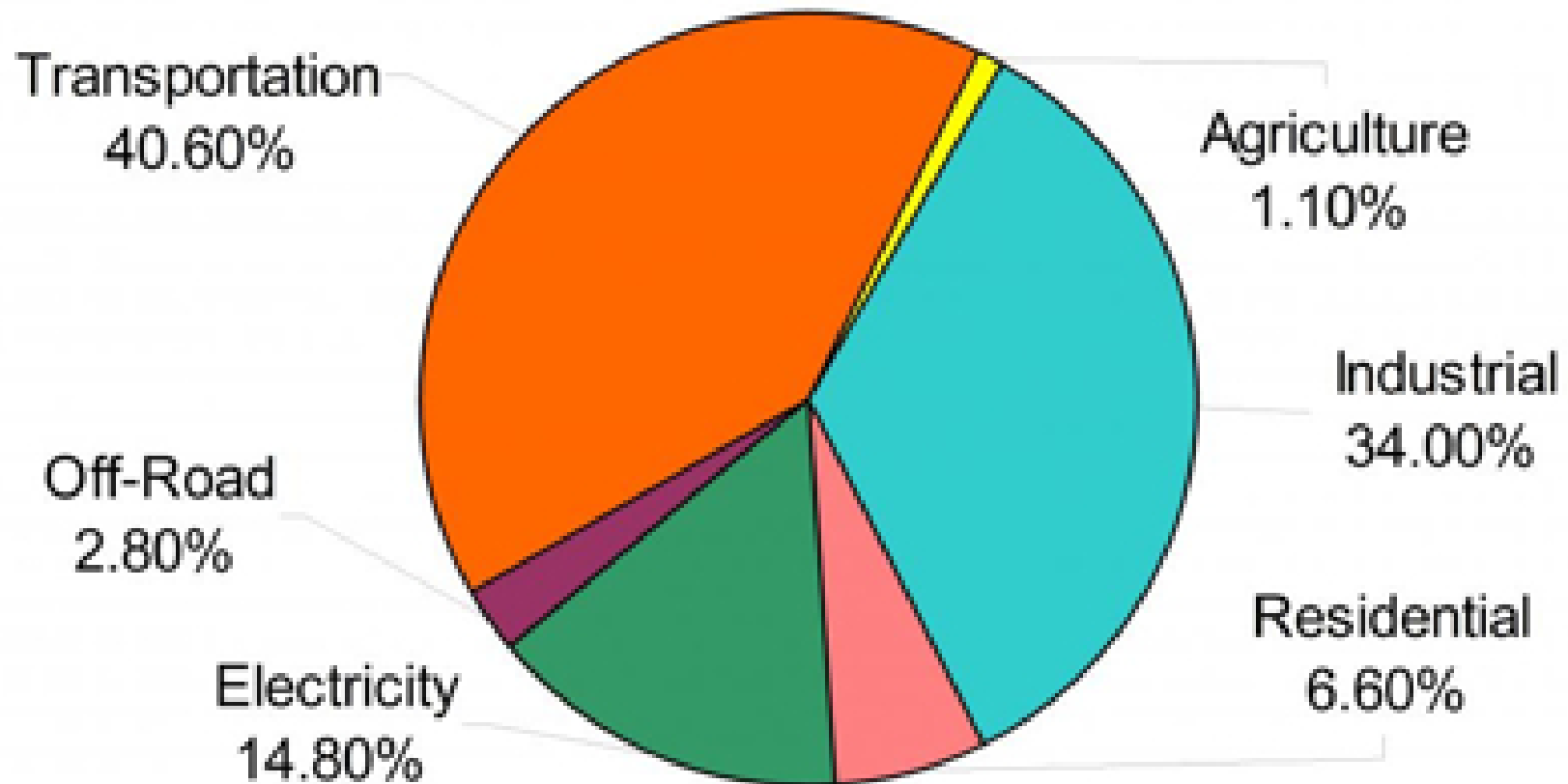
CO<sub>2</sub> stabilization: **100 to 300 years**

CO<sub>2</sub> emissions

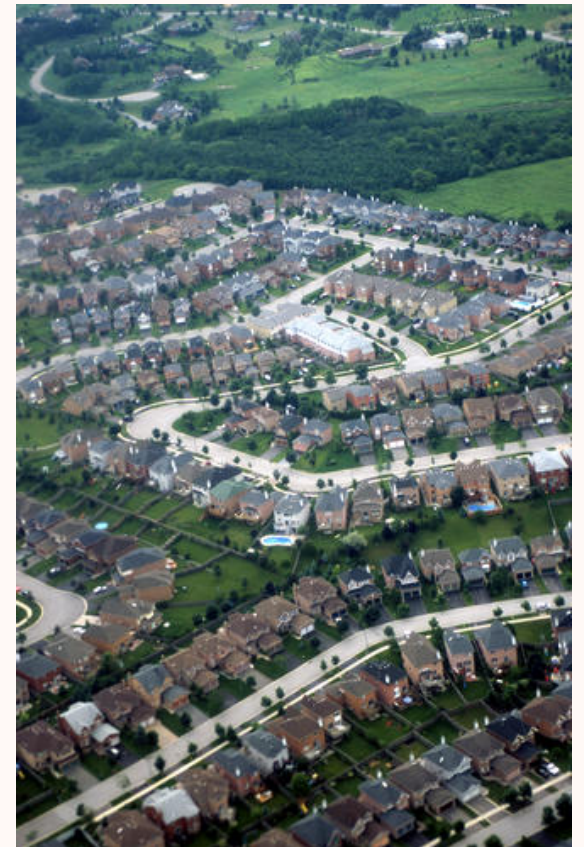
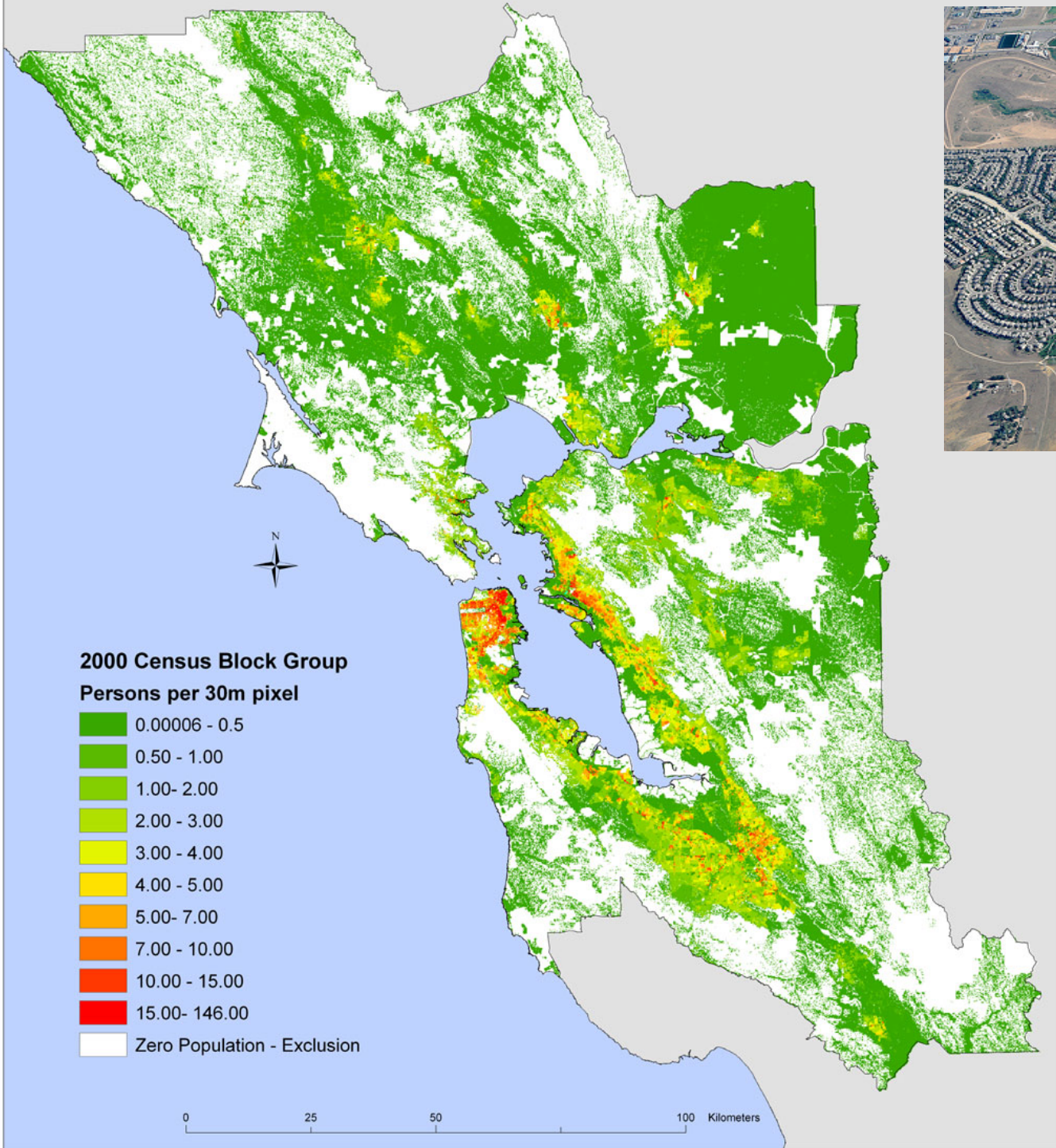
SYR - FIGURE 5-2



## SF Bay Area Greenhouse Gas Emissions By Source for 2007



# 2000 Population Density for the San Francisco Bay Region



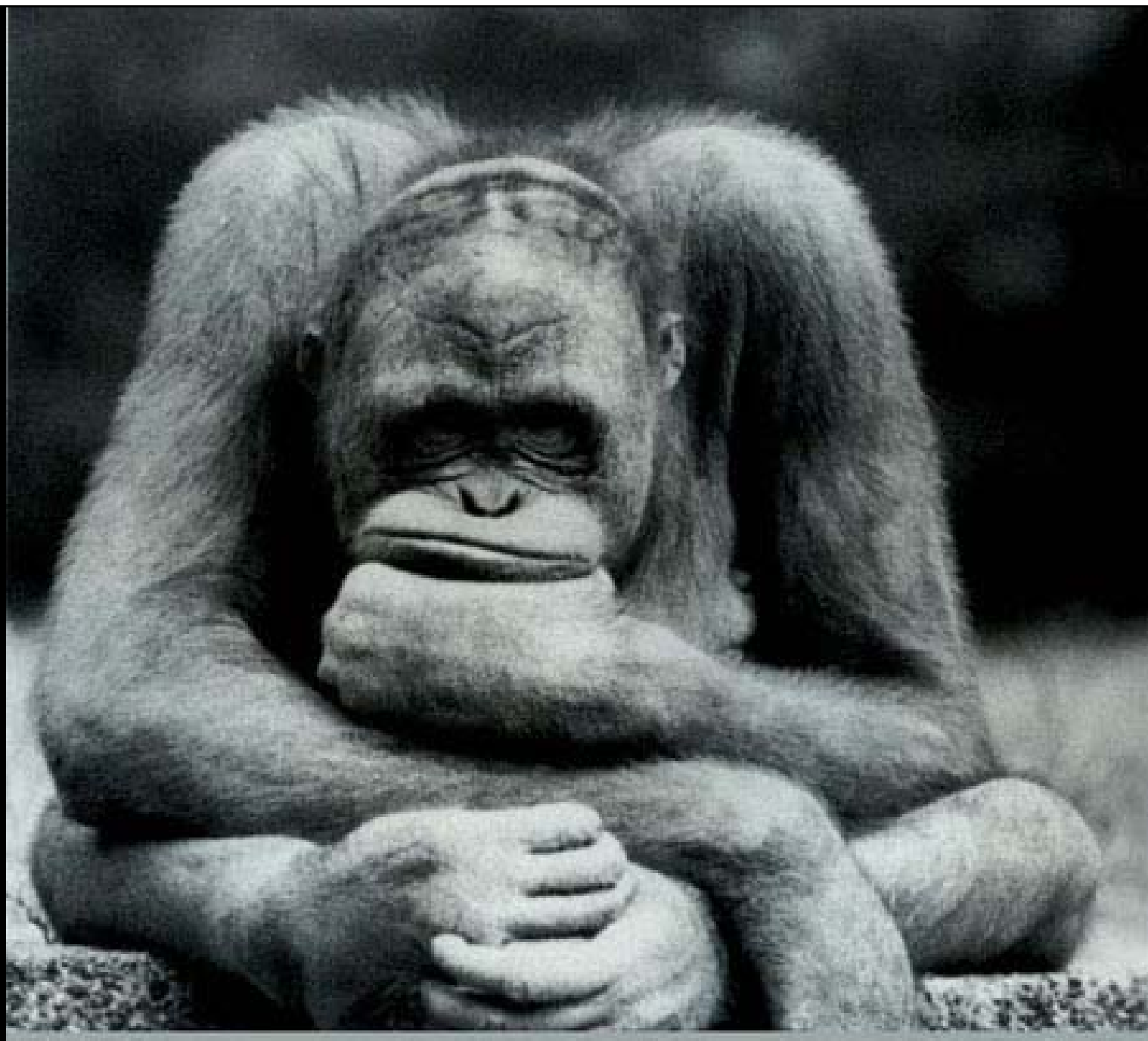






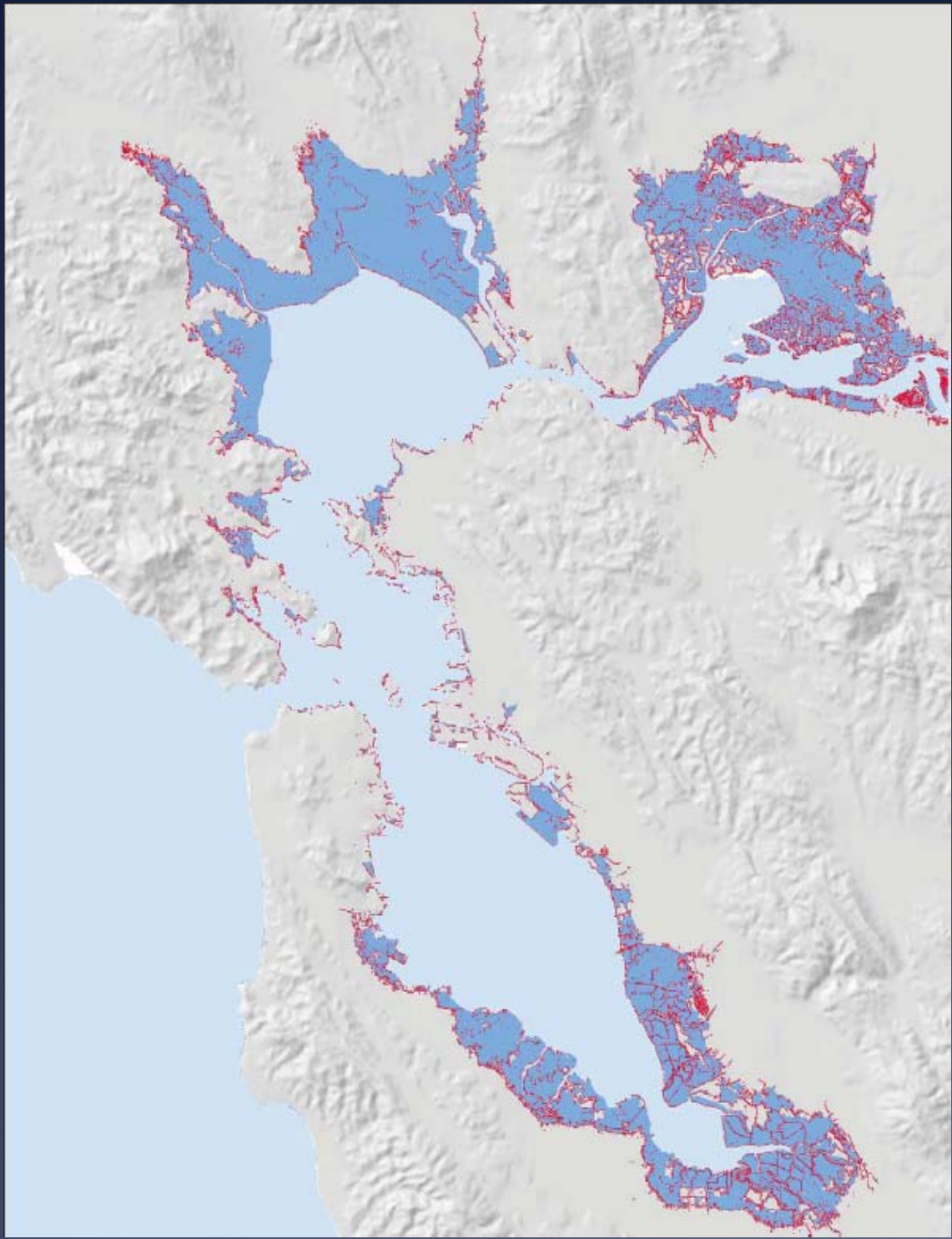






Oh what to to, what to dooo?





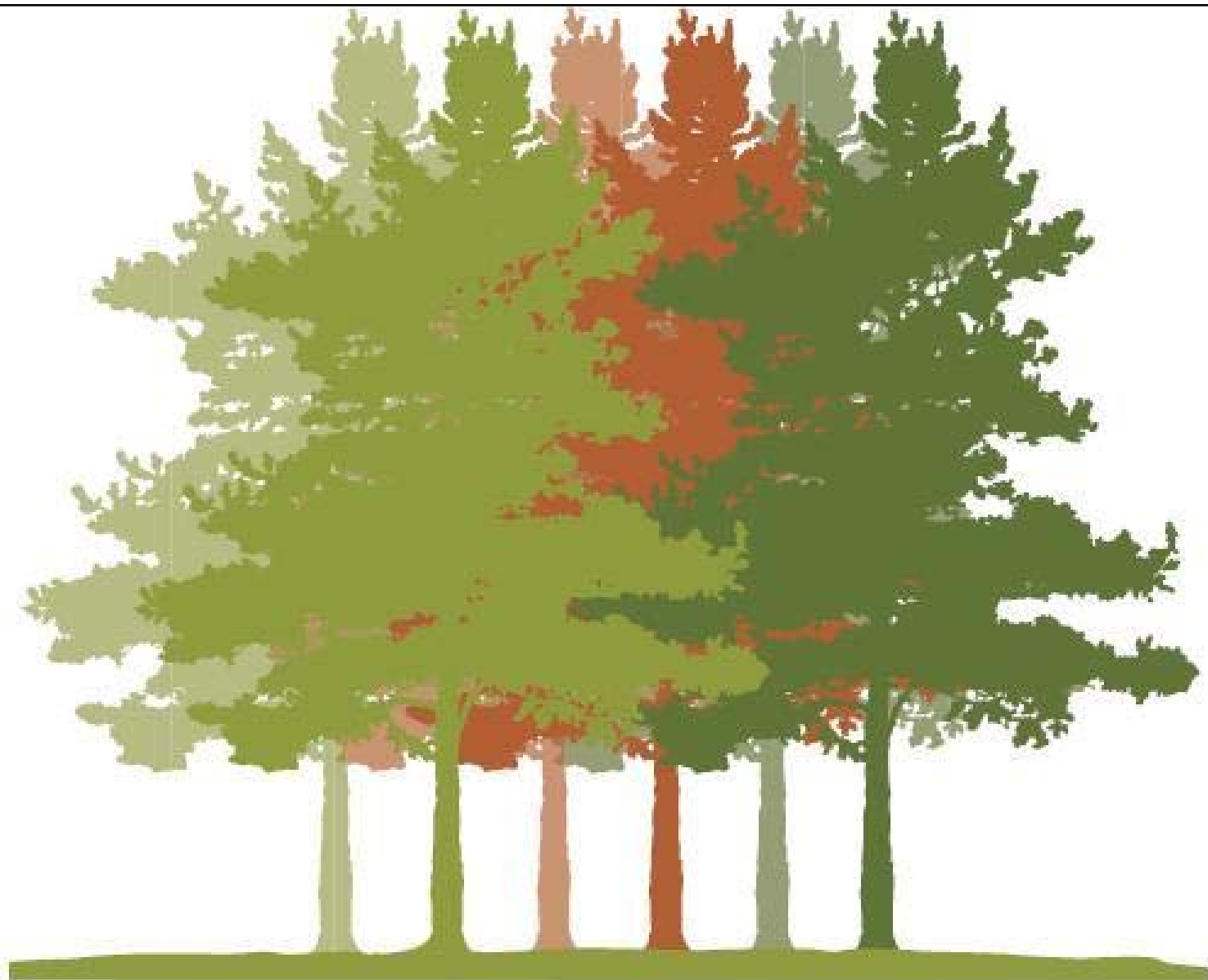
# Today's Flood is Tomorrow's High Tide



Area subject to high tide with 16 inches of sea level rise



Current 100-year flood plain

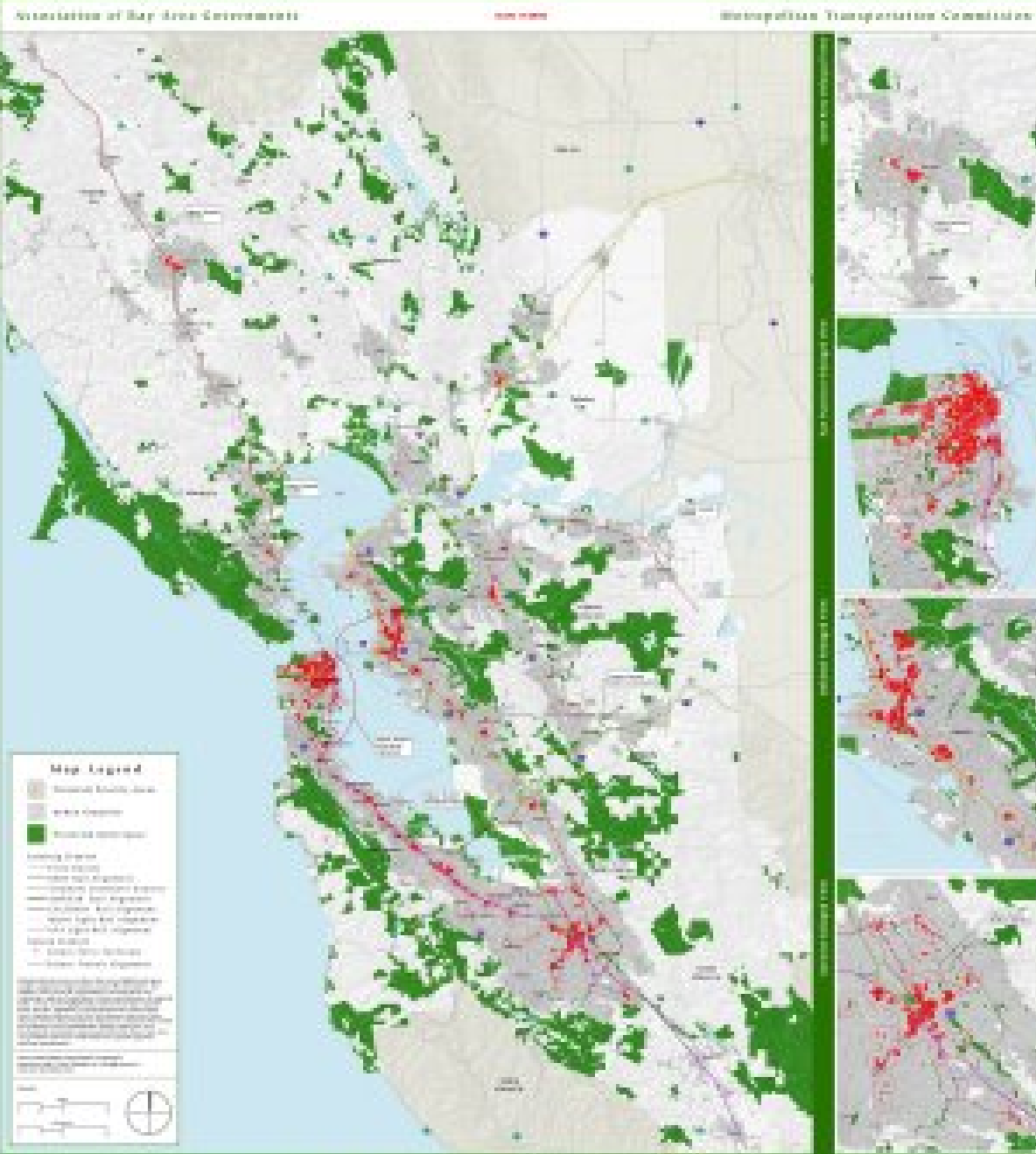


**HEAD FOR THE HILLS**



# Focusing Our Vision: Regional Analysis

## Potential Priority Areas based on TAC Composite Scenario



Average Weight of all Themes Voted on by TAC Members







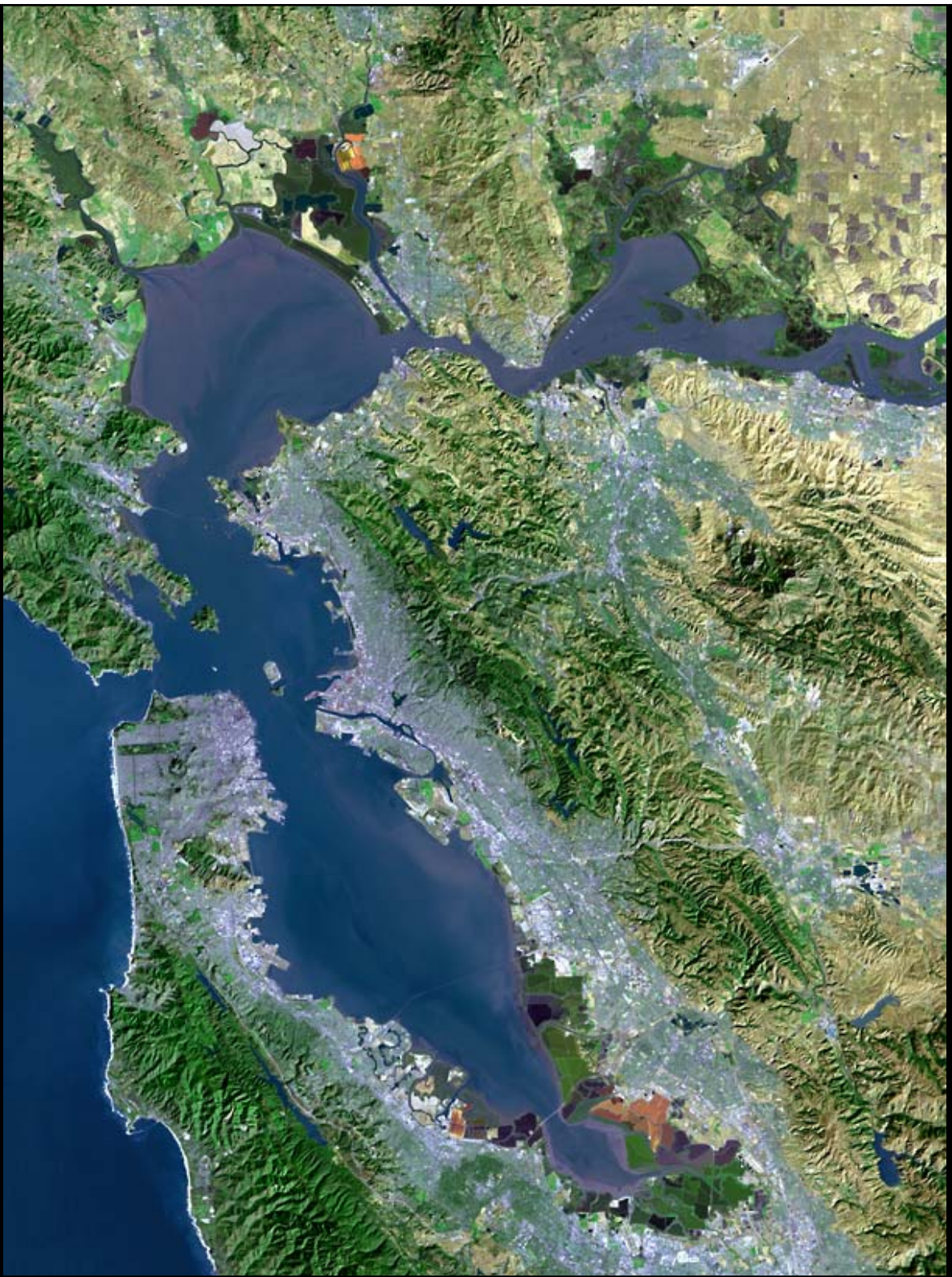
























RISING TIDES



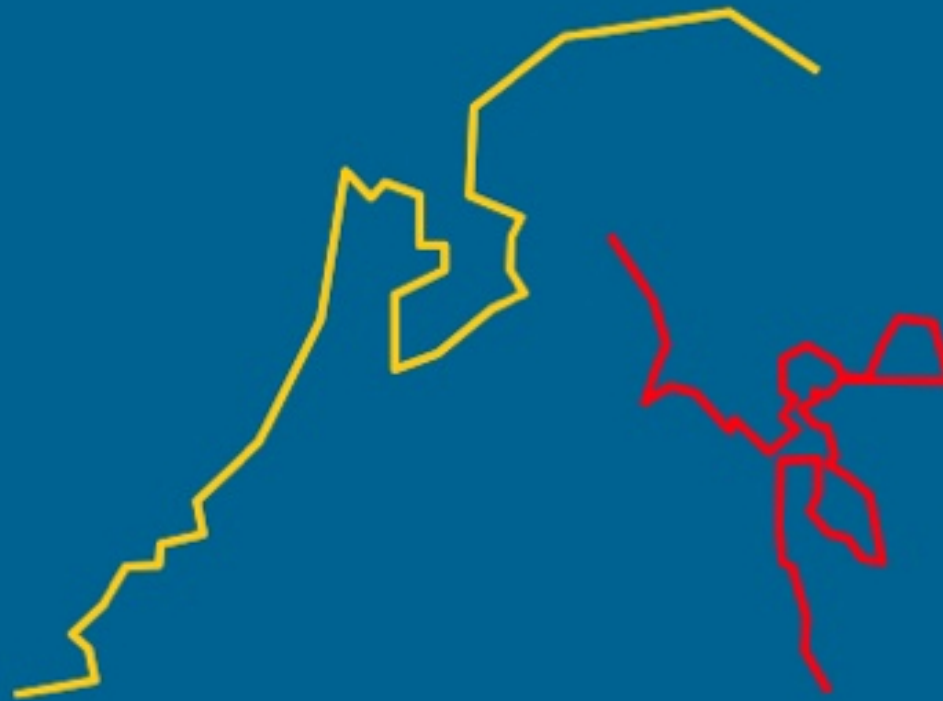
call for ideas



**Rising Tides Design Ideas Competition**

[www.risingtidescompetition.com](http://www.risingtidescompetition.com)

# San Francisco Bay: Preparing for the next level



21 September 2009



in collaboration  
with:









The world we have created today, as a result of our thinking thus far, has problems that cannot be solved by thinking the way we thought when we created them.

*Albert Einstein*

